

# INDUSTRIAL 2D LASER SCANNER

산업용 2D 레이저 스캐너  
DPS-2590



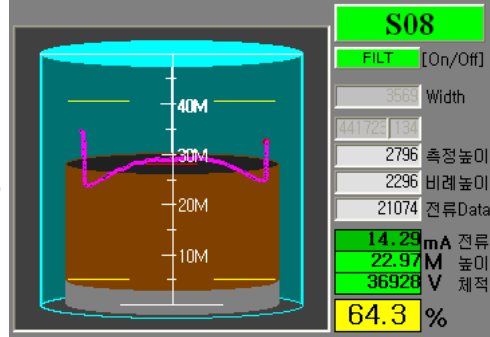
## Laser-Scanner & BIN Level System

DPS-2590 with Housing



### Key features

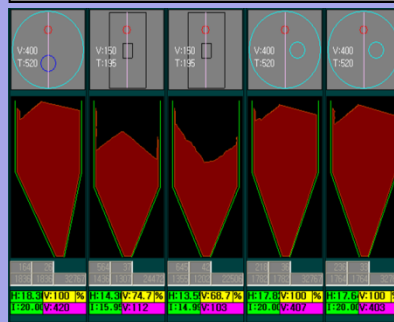
- Array Pulsed Laser TOF Scanner  
→ 최고성능의 투과율 및 안정성
- 20~40Hz Scan Rate - Speed
- Distance: 250M/Max, 80M@10%
- 1000point/Scan, 0.09° / 90° Step
- Resolution: 1mm
- Accuracy: 4 mm
- Protection: IP67 NEMA-4X



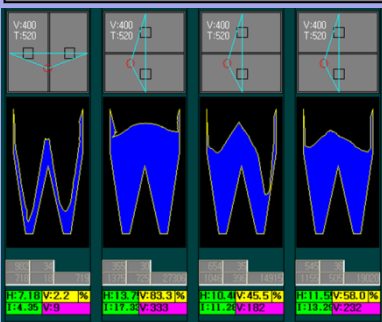
### Industrial LASER SCANNER

MODEL	DPS-2590
LASER TYPE	Laser Type: Pulse Laser Diode Wavelength: 905 nm (Infrared) Safety: Class 1M, EN 60825-1 Pointer Laser: 645 nm (RED), Class 2
SCAN & SPOT PROPERTIES	SCAN Angle: 90° (45-135°) SCAN Rate: 20Hz, Resolution: 0.09° (1000-Point/Scan) SCAN Rate: 40Hz, Resolution: 0.18° (500-Point/Scan) Beam Divergence (Y,V): 1.33 mrad(0.076°, 0.13M @ 100 m) Beam Divergence (X,H): 0.30 mrad(0.020°, 0.03M @ 100 m) Focusing SPOT: 12x16[mm]@45Meter
Measuring Quality	Distance Resolution: 1[mm] Distance Accuracy: 4[mm] (σ of single measurement: 4mm) Working Range Distance @White-Target: 250Meter @100% Working Range Distance @Dark-Target: 80Meter @10% Working Range Minimum: 1.6Meter
Power and Interface	Power Input: 24VDC ( 2.0A/Max ) LAN Port: Ethernet RJ45 Serial Port: RS-232 & RS-422
Environmental	Operating Temperature: -10 to +50 [°C] Humidity: 20% to 80% relative humidity
Enclosure Housing (Dimension)	Housing: 300 x 400 x 300 [mm] SUS, Outdoor / Dust proven Protection: IP65 NEMA-4X

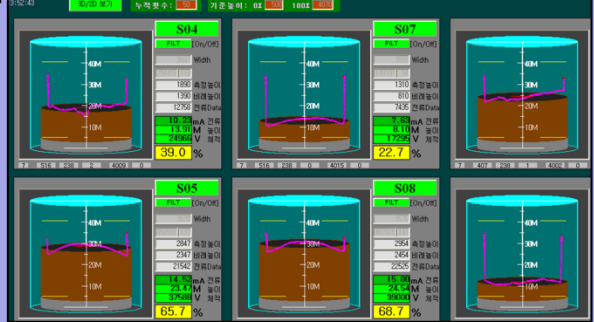
### [5소결] BIN LEVEL MONITORING



### [미분광] BIN LEVEL MONITORING



### [SILO] BIN LEVEL MONITORING



서울특별시 금천구 벚꽃로 254  
월드메르디앙벤처센터1차 1411호  
가산동(서울디지털산업단지,2단지)  
TEL:02-868-8277 FAX:02-868-8233

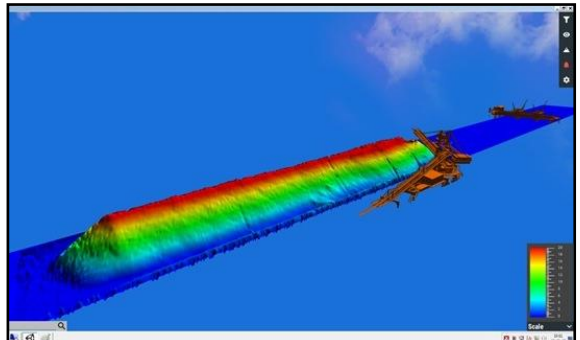
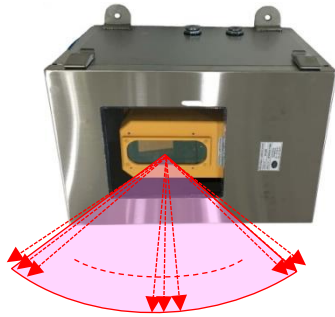
# INDUSTRIAL 2D LASER SCANNER

산업용 2D 레이저 스캐너  
DPS-2590



Laser-Scanner & BIN Level System

**Real Time LASER SCANNING**  
\*\*\*\*\*  
**BIN-SILO-HOPPER Stockpile Monitoring**



**[SILO] BIN LEVEL MONITORING**

2016-06-17 10:44:54    UTime: 2016-06-17 10:40:47    30/20 보기    누침 횟수: 0    기준 높이: 0x    100x    100x

Bin ID	Level (%)	Height (m)	Width (m)	Current (mA)	Voltage (V)
S01	70.1	26.73	3067.7	15.22	4067.7
S02	83.5	31.91	2737.2	17.38	4541.7
S03	31.7	1.67	1035.4	3.08	1930.2
S04	94.8	38.24	3106.7	19.12	5113.3
S05	79.7	32.94	2811.1	16.79	4392.2
S06	16.0	0.60	523.3	0.30	1136.7
S07	66.0	27.71	2162.5	14.56	3625.7
S08	75.4	31.32	2472.2	16.07	4135.0
S09	79.7	30.43	2610.3	16.75	4347.6
S10	80.8	33.85	2546.3	16.39	4093.8
S11	89.8	36.82	2944.0	18.31	4693.8
S12	52.6	22.53	2962.9	12.42	3262.9
S13	82.8	34.10	2710.7	17.28	4516.0
S14	15.1	0.81	452.5	0.42	1091.9
S15	68.7	28.75	2250.0	14.49	3793.1



**DSi** 다산인포텍  
DASAN InfoTek

서울특별시 금천구 빛골로 254  
월드메르디앙벤처센터1차 1411호  
가산동(서울디지털산업단지,2단지)  
TEL:02-868-8277 FAX:02-868-8233